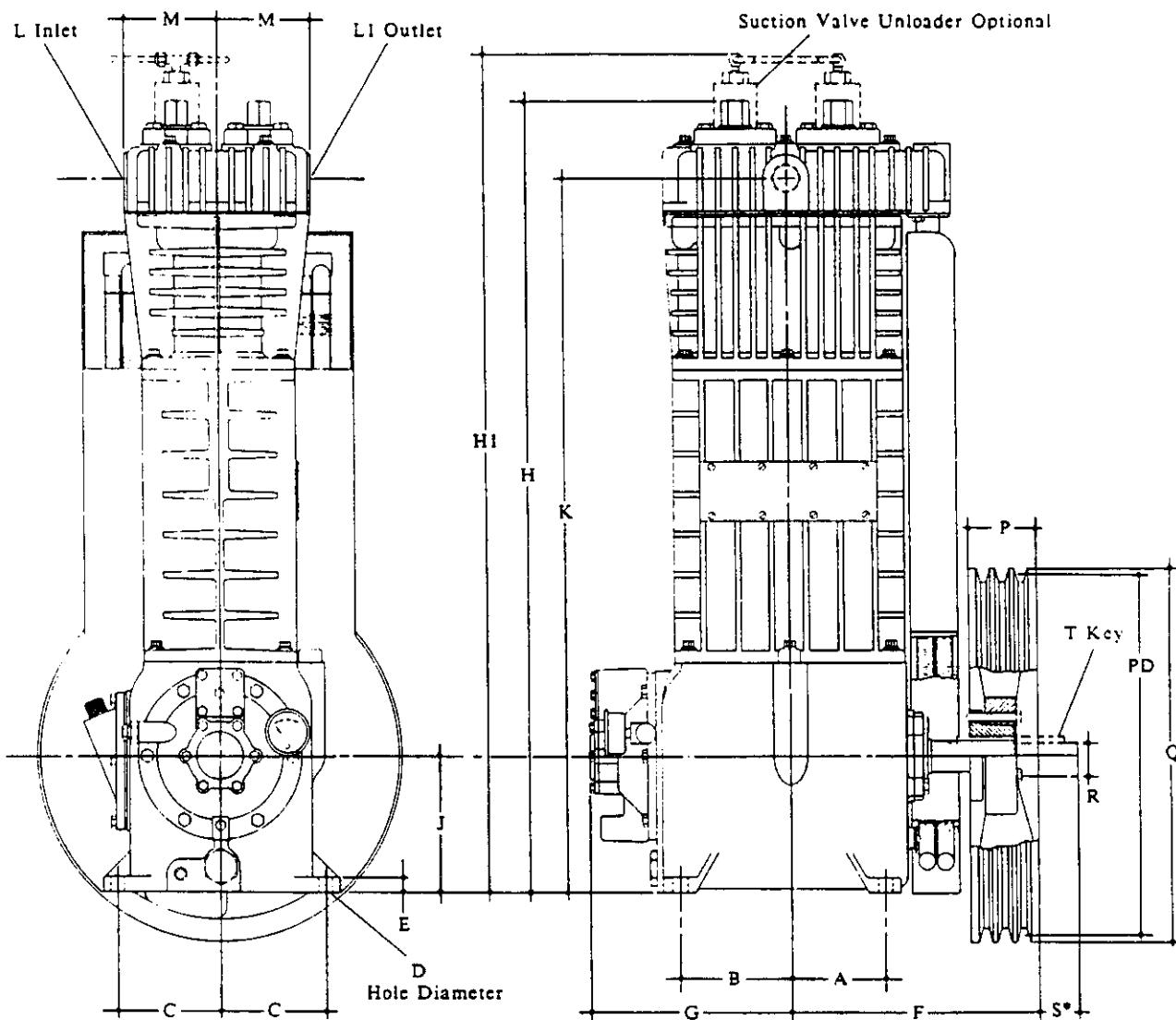


**MODELS D190 AND D390
OUTLINE DIMENSIONS**

JULY 1986
SUPERSEDES EE350



DIMENSIONS IN INCHES (CENTIMETERS)													
Model No.	A	B	C	D	E	F	G	H	H1	J	K	L	L1
D190	3-3/8 (8.57)	4-1/8 (10.5)	3-11/16 (9.37)	13/32 (1.03)	5/8 (1.59)	9-13/16 (24.9)	6-11/16 (17.0)	29-13/16 (75.7)	31-3/16 (79.2)	5-3/8 (13.6)	27 (68.6)	3/4 NPT	3/4 NPT
D390	4-1/8 (10.4)	5 (12.7)	4-11/16 (11.9)	1/2 (1.27)	11/16 (1.75)	10-11/16 (27.2)	8-3/4 (22.2)	34-5/16 (87.1)	36-5/16 (92.2)	5-7/8 (14.9)	30-15/16 (78.5)	1 NPT	3/4 NPT

Model No.	M	P	Q	R	S*	T	'PD' Flywheel Pitch Diagonal			
							A-Belt Grooves	B-Belt Grooves	B-Belt Grooves	B-Belt Grooves
D190	3 (7.62)	3 (7.62)	16 (40.6) 14* (35.6)	1-1/4 (3.18)	1-1/4 (3.18)	1/4 (0.63)	15.2 (38.6)	3	15.6 (39.6)	3
							13.2* (33.5)	2	13.6* (34.5)	2
D390	4-1/8 (10.4)	3 (7.62)	16 (40.6) 14* (35.6)	1-3/8 (3.49)	1-1/4 (3.18)	5/16 (0.79)	15.2 (38.6)	3	15.6 (39.6)	3
							13.2* (33.5)	2	13.6* (34.5)	2

*OPTIONAL